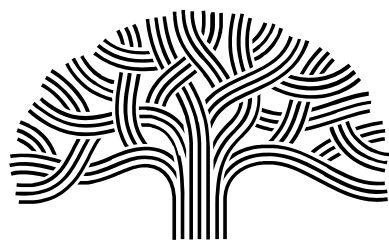


Oakland 2045 General Plan Update | Phase 1 Zoning Amendments

Presentation to the Landmarks
Preservation Advisory Board

May 1, 2023
(cont'd from April 3, 2023)

Planning and Building Department



**CITY OF
OAKLAND**



Agenda

- Overview
- Missing Middle Housing Type Code Amendments
- Affordable Housing Overlay Zone
- Housing Sites Inventory Zone
- Industrial Lands Code Amendments
- Other Planning Code Amendments
- Next Steps

Overview

2045 General Plan Update

- **Legal Basis** for development and conservation.
- Establishes citywide vision and supporting **goals, policies, and implementation measures**.
- **Eight** required Elements
- **Two Phase Approach to General Plan Update:**
- **Phase I (Winter 2021 – Summer 2023)**
 - 2023-2031 Housing Element (*Adopted January 31, 2023*)
 - Safety Element & Environmental Justice Element
 - Zoning Code Amendments for Phase 1
- **Phase II (From Fall 2023)**
 - Land Use and Transportation Element
 - Open Space, Conservation and Recreation Element
 - Capital Facilities and Infrastructure Element
 - Noise Element and Updates to the Zoning Code

Proposed Planning Code Text Amendments – Purpose

- Implement actions in the 2023-2031 HAP
- Further fair housing
- Encourage a variety of multi-unit housing types in Oakland
- Incentivize affordable housing
- Add housing in areas well served by transit and resources
- Advance environmental justice by reducing pollution burden on communities
- Reduce constraints on housing development, processing entitlements

Proposed Planning Code Text Amendments – Overview

Missing Middle Housing Type Code Amendments

- Change development standards in single-family neighborhoods to allow for a range of small-scale multi-unit housing types + upzoning and height changes

Affordable Housing Overlay Zone

- Ministerial approval + incentives for 100% affordable projects

Housing Sites Overlay Zone

- Ministerial approval for identified sites in HE

Industrial Land Zoning Amendments

- Reduce pollution impacts on communities

Other Planning Code Amendments

- Facilitate special housing types, remove constraints on processing entitlements

Timeline

- September 2022- February 2023 - Laying the Groundwork
 - Preliminary zoning proposals as part of the Housing Element – Appendix J
 - Written and verbal comments received through the 2023-2031 Housing Element Update Process
 - Focus Groups on Affordable Housing Overlay and Missing Middle
- March 3, 2023 - Draft Text Amendments Published
- **March 3, 2023 - May 9, 2023 - Public Review Period**
 - Community meetings
 - Public Hearings with ZUC, LPAB
- Summer 2023 - Final Zoning Amendments Released
- Summer – Fall 2023 – Adoption Hearings

All Community Events and Public Meetings: oaklandca.gov/topics/meetings-and-events

Missing Middle Housing Type Code Amendments

Missing Middle Proposed Changes – Defining "Missing Middle"

- A variety of small-scale multi-unit housing types that can range from **duplexes to townhouses to smaller apartment buildings** that are compatible with walkable neighborhoods.
 - Compatible in scale with single-family neighborhoods
 - Intended to meet the demand for walkable neighborhoods, Provide housing at different price points

Missing Middle Proposal – Development Standards

- New RD zone combines RD-1 and RD-2
- All RD, RM, and RU zones now allow 4 or more units on lots <4,000 sf
- Max FAR and lot coverage increased to 55% in RD and RM Zones (applies to one and two residential units)
- New residential facility type: Two-to-Four Family Residential Zone
- Eliminate conditionally permitted densities

Missing Middle Proposal – Development Standards

Revised density,
maximum
building heights,
and minimum lot
size standards in
RH-4, RD, RM, RU-
1, and RU-2 zones.

Table 1: Oakland's Missing Middle Zones

Zoning Districts	Existing Permitted Densities	Proposed Permitted Densities	Existing Max. Bldg. Height	Proposed Max. Bldg. Height	Existing Min. Lot Size and Frontage	Proposed Min. Lot Size and Frontage	Existing Setbacks	Proposed Setbacks
RH-4	1 unit per lot	<ul style="list-style-type: none"> 1 unit on any legal lot; 2 units on any lot (with limitation that the project is not located within the Very High Fire Hazard Severity Zone) 	For Lots with Footprint Slope of $\leq 20\%$: Max. Wall Ht.: <u>25 ft.</u> Max. Roof Ht.: <u>30 ft.</u>	(Same - No Change)	6,500 sf. or 8,000 sf.	(Same - No Change)	For Lots with Footprint Slope of $\leq 20\%$: Front - <u>20 ft.</u> St. Side - <u>5 ft.</u> Int. Side - <u>5 ft.</u> Rear - <u>20 ft.</u>	(Same - No Change)
RD (new zone to replace RD-1 & RD-2)	RD-1: 1 unit per lot	New RD: <ul style="list-style-type: none"> 1-2 units on any legal lot; 3 units on lots 3,000 sf. or greater; 4 units on lots 4,000 sf. or greater 	RD-1: For Lots with Footprint Slope of $\leq 20\%$: Max. Wall Ht.: <u>25 ft.</u> Max. Roof Ht.: <u>30 ft.</u>	New RD: For Lots with Footprint Slope of $\leq 20\%$: Max. Wall Height: <u>30 ft.</u> Max. Roof Height: <u>35 ft.</u>	RD-1: Min. Lot Size: <u>5,000 sf.</u> Min. Lot Frontage: <u>25 ft.</u>	New RD: Min. Lot Size: <u>2,000 sf.</u> Min. Lot Frontage: <u>20 ft.</u>	RD-1: For Lots $\geq 4,000$ sf, w/ Footprint slope of $\leq 20\%$: Front: <u>20 ft.</u> St. Side: <u>5 ft.</u> Int. Side: <u>5 ft.</u> Rear: <u>20 ft.</u> For Lots $< 4,000$ sf, w/ Footprint slope of $\leq 20\%$: Front: <u>20 ft.</u> St. Side: <u>4 ft.</u> Int. Side: <u>4 ft.</u> Rear: <u>15 ft.</u> For Lots $< 3,000$ sf, w/ Footprint slope of $\leq 20\%$: Front: <u>20 ft.</u> St. Side: <u>3 ft.</u> Int. Side: <u>3 ft.</u> Rear: <u>15 ft.</u>	New RD: For Lots $\geq 3,000$ sf., w/ Footprint slope of $\leq 20\%$: Front: <u>15 ft.</u> St. Side: <u>4 ft.</u> Int. Side: <u>4 ft.</u> Rear: <u>10 ft.</u> For Lots $< 3,000$ sf., w/ Footprint slope of $\leq 20\%$: Front: <u>15 ft.</u> St. Side: <u>3 ft.</u> Int. Side: <u>3 ft.</u> Rear: <u>10 ft.</u>

Missing Middle Proposal – Setbacks

- Side setbacks: reduced to 3 ft for lots less than 3,000 sf and 4 ft for lots >3,000 sf in RD and RM zones
- Rear setbacks: reduced from 20 ft to 10 ft in RD zones, and 15 ft to 10 ft in RM zones
- Front setbacks: 20 ft to 15 ft in RD, RM-1, and RM-2 zones
- Allow for encroachments of regular units into rear setback, similar to ADUs

Missing Middle Proposal – Other Changes

- No minimum parking requirements for residential types within $\frac{1}{2}$ mi of major transit stop; otherwise, 0.5 spaces per unit required.
 - No minimum parking requirements within S-15, D-CO-1 zones
 - No minimum parking requirements for 100% affordable projects
 - No min. parking requirements for rooming houses, with exception of those in Very High Fire Hazard Severity Zone

Missing Middle Proposal – Upzoning

Proposed Zoning District

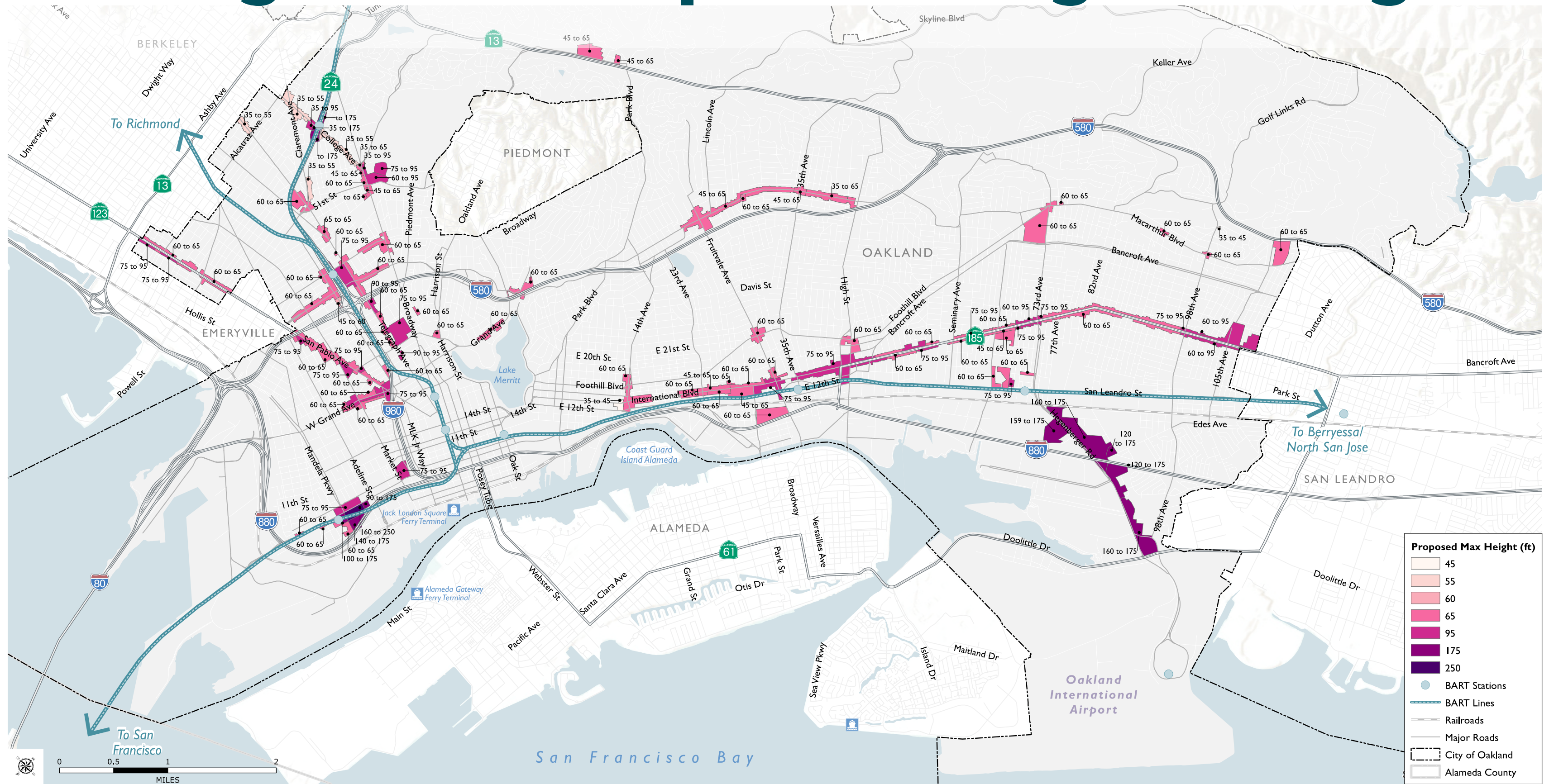
- S-15
- IO
- CIX-1B
- CIX-2
- RD-2
- HBX-2
- CN-1
- CN-2
- CN-3
- CN-4
- CC-2
- CR-1
- CR-2
- RM-2
- RM-3
- RM-4
- RU-1
- RU-2
- RU-3
- RU-4

Legend:

- BART Stations
- BART Lines
- Railroads
- Major Roads
- City of Oakland
- Alameda County

Map Labels: BERKELEY, PIEDMONT, OAKLAND, EMERYVILLE, ALAMEDA, SAN LEANDRO, San Francisco Bay, Oakland International Airport, Lake Merritt, Lake Chabot, Coast Guard Island Alameda, Jack London Square Ferry Terminal, Alameda Gateway Ferry Terminal, Sea View Pkwy, Island Dr, Maitland Dr, Doolittle Dr, 98th Ave, 99th Ave, 100th Ave, 101st Ave, 102nd Ave, 103rd Ave, 104th Ave, 105th Ave, 106th Ave, 107th Ave, 108th Ave, 109th Ave, 110th Ave, 111th Ave, 112th Ave, 113th Ave, 114th Ave, 115th Ave, 116th Ave, 117th Ave, 118th Ave, 119th Ave, 120th Ave, 121st Ave, 122nd Ave, 123rd Ave, 124th Ave, 125th Ave, 126th Ave, 127th Ave, 128th Ave, 129th Ave, 130th Ave, 131st Ave, 132nd Ave, 133rd Ave, 134th Ave, 135th Ave, 136th Ave, 137th Ave, 138th Ave, 139th Ave, 140th Ave, 141st Ave, 142nd Ave, 143rd Ave, 144th Ave, 145th Ave, 146th Ave, 147th Ave, 148th Ave, 149th Ave, 150th Ave, 151st Ave, 152nd Ave, 153rd Ave, 154th Ave, 155th Ave, 156th Ave, 157th Ave, 158th Ave, 159th Ave, 160th Ave, 161st Ave, 162nd Ave, 163rd Ave, 164th Ave, 165th Ave, 166th Ave, 167th Ave, 168th Ave, 169th Ave, 170th Ave, 171st Ave, 172nd Ave, 173rd Ave, 174th Ave, 175th Ave, 176th Ave, 177th Ave, 178th Ave, 179th Ave, 180th Ave, 181st Ave, 182nd Ave, 183rd Ave, 184th Ave, 185th Ave, 186th Ave, 187th Ave, 188th Ave, 189th Ave, 190th Ave, 191st Ave, 192nd Ave, 193rd Ave, 194th Ave, 195th Ave, 196th Ave, 197th Ave, 198th Ave, 199th Ave, 200th Ave, 201st Ave, 202nd Ave, 203rd Ave, 204th Ave, 205th Ave, 206th Ave, 207th Ave, 208th Ave, 209th Ave, 210th Ave, 211th Ave, 212th Ave, 213th Ave, 214th Ave, 215th Ave, 216th Ave, 217th Ave, 218th Ave, 219th Ave, 220th Ave, 221st Ave, 222nd Ave, 223rd Ave, 224th Ave, 225th Ave, 226th Ave, 227th Ave, 228th Ave, 229th Ave, 230th Ave, 231st Ave, 232nd Ave, 233rd Ave, 234th Ave, 235th Ave, 236th Ave, 237th Ave, 238th Ave, 239th Ave, 240th Ave, 241st Ave, 242nd Ave, 243rd Ave, 244th Ave, 245th Ave, 246th Ave, 247th Ave, 248th Ave, 249th Ave, 250th Ave, 251st Ave, 252nd Ave, 253rd Ave, 254th Ave, 255th Ave, 256th Ave, 257th Ave, 258th Ave, 259th Ave, 260th Ave, 261st Ave, 262nd Ave, 263rd Ave, 264th Ave, 265th Ave, 266th Ave, 267th Ave, 268th Ave, 269th Ave, 270th Ave, 271st Ave, 272nd Ave, 273rd Ave, 274th Ave, 275th Ave, 276th Ave, 277th Ave, 278th Ave, 279th Ave, 280th Ave, 281st Ave, 282nd Ave, 283rd Ave, 284th Ave, 285th Ave, 286th Ave, 287th Ave, 288th Ave, 289th Ave, 290th Ave, 291st Ave, 292nd Ave, 293rd Ave, 294th Ave, 295th Ave, 296th Ave, 297th Ave, 298th Ave, 299th Ave, 300th Ave, 301st Ave, 302nd Ave, 303rd Ave, 304th Ave, 305th Ave, 306th Ave, 307th Ave, 308th Ave, 309th Ave, 310th Ave, 311th Ave, 312th Ave, 313th Ave, 314th Ave, 315th Ave, 316th Ave, 317th Ave, 318th Ave, 319th Ave, 320th Ave, 321st Ave, 322nd Ave, 323rd Ave, 324th Ave, 325th Ave, 326th Ave, 327th Ave, 328th Ave, 329th Ave, 330th Ave, 331st Ave, 332nd Ave, 333rd Ave, 334th Ave, 335th Ave, 336th Ave, 337th Ave, 338th Ave, 339th Ave, 340th Ave, 341st Ave, 342nd Ave, 343rd Ave, 344th Ave, 345th Ave, 346th Ave, 347th Ave, 348th Ave, 349th Ave, 350th Ave, 351st Ave, 352nd Ave, 353rd Ave, 354th Ave, 355th Ave, 356th Ave, 357th Ave, 358th Ave, 359th Ave, 360th Ave, 361st Ave, 362nd Ave, 363rd Ave, 364th Ave, 365th Ave, 366th Ave, 367th Ave, 368th Ave, 369th Ave, 370th Ave, 371st Ave, 372nd Ave, 373rd Ave, 374th Ave, 375th Ave, 376th Ave, 377th Ave, 378th Ave, 379th Ave, 380th Ave, 381st Ave, 382nd Ave, 383rd Ave, 384th Ave, 385th Ave, 386th Ave, 387th Ave, 388th Ave, 389th Ave, 390th Ave, 391st Ave, 392nd Ave, 393rd Ave, 394th Ave, 395th Ave, 396th Ave, 397th Ave, 398th Ave, 399th Ave, 400th Ave, 401st Ave, 402nd Ave, 403rd Ave, 404th Ave, 405th Ave, 406th Ave, 407th Ave, 408th Ave, 409th Ave, 410th Ave, 411th Ave, 412th Ave, 413th Ave, 414th Ave, 415th Ave, 416th Ave, 417th Ave, 418th Ave, 419th Ave, 420th Ave, 421st Ave, 422nd Ave, 423rd Ave, 424th Ave, 425th Ave, 426th Ave, 427th Ave, 428th Ave, 429th Ave, 430th Ave, 431st Ave, 432nd Ave, 433rd Ave, 434th Ave, 435th Ave, 436th Ave, 437th Ave, 438th Ave, 439th Ave, 440th Ave, 441st Ave, 442nd Ave, 443rd Ave, 444th Ave, 445th Ave, 446th Ave, 447th Ave, 448th Ave, 449th Ave, 450th Ave, 451st Ave, 452nd Ave, 453rd Ave, 454th Ave, 455th Ave, 456th Ave, 457th Ave, 458th Ave, 459th Ave, 460th Ave, 461st Ave, 462nd Ave, 463rd Ave, 464th Ave, 465th Ave, 466th Ave, 467th Ave, 468th Ave, 469th Ave, 470th Ave, 471st Ave, 472nd Ave, 473rd Ave, 474th Ave, 475th Ave, 476th Ave, 477th Ave, 478th Ave, 479th Ave, 480th Ave, 481st Ave, 482nd Ave, 483rd Ave, 484th Ave, 485th Ave, 486th Ave, 487th Ave, 488th Ave, 489th Ave, 490th Ave, 491st Ave, 492nd Ave, 493rd Ave, 494th Ave, 495th Ave, 496th Ave, 497th Ave, 498th Ave, 499th Ave, 500th Ave, 501st Ave, 502nd Ave, 503rd Ave, 504th Ave, 505th Ave, 506th Ave, 507th Ave, 508th Ave, 509th Ave, 510th Ave, 511th Ave, 512th Ave, 513th Ave, 514th Ave, 515th Ave, 516th Ave, 517th Ave, 518th Ave, 519th Ave, 520th Ave, 521st Ave, 522nd Ave, 523rd Ave, 524th Ave, 525th Ave, 526th Ave, 527th Ave, 528th Ave, 529th Ave, 530th Ave, 531st Ave, 532nd Ave, 533rd Ave, 534th Ave, 535th Ave, 536th Ave, 537th Ave, 538th Ave, 539th Ave, 540th Ave, 541st Ave, 542nd Ave, 543rd Ave, 544th Ave, 545th Ave, 546th Ave, 547th Ave, 548th Ave, 549th Ave, 550th Ave, 551st Ave, 552nd Ave, 553rd Ave, 554th Ave, 555th Ave, 556th Ave, 557th Ave, 558th Ave, 559th Ave, 560th Ave, 561st Ave, 562nd Ave, 563rd Ave, 564th Ave, 565th Ave, 566th Ave, 567th Ave, 568th Ave, 569th Ave, 570th Ave, 571st Ave, 572nd Ave, 573rd Ave, 574th Ave, 575th Ave, 576th Ave, 577th Ave, 578th Ave, 579th Ave, 580th Ave, 581st Ave, 582nd Ave, 583rd Ave, 584th Ave, 585th Ave, 586th Ave, 587th Ave, 588th Ave, 589th Ave, 590th Ave, 591st Ave, 592nd Ave, 593rd Ave, 594th Ave, 595th Ave, 596th Ave, 597th Ave, 598th Ave, 599th Ave, 600th Ave, 601st Ave, 602nd Ave, 603rd Ave, 604th Ave, 605th Ave, 606th Ave, 607th Ave, 608th Ave, 609th Ave, 610th Ave, 611

Missing Middle Proposal – Height Changes



SOURCE: City of Oakland, 2022; ALAMEDA County GIS, 2021; Dyett & Bhatia, 2022

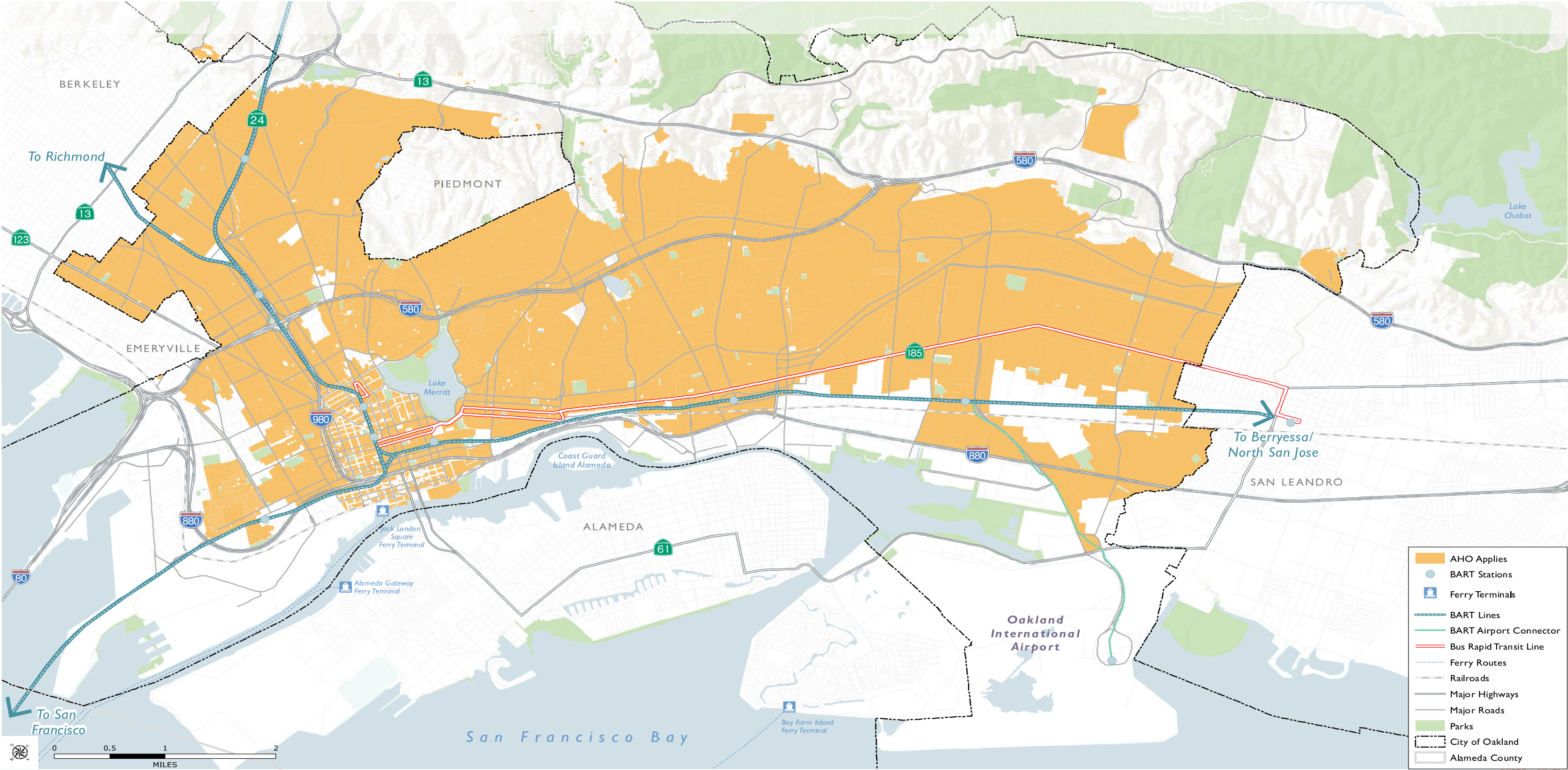
DYETT & BHATIA
Urban and Regional Planners

Affordable Housing Overlay (AHO) Zone

Affordable Housing Overlay (AHO) Zone – Overview

- **Purpose:** create affordable housing restricted for extremely low, very low, low, and/or moderate-income households
- **Components:**
 - By-Right (Ministerial) approval, CEQA exemption, and non-appealable
 - Possibility of extending streamlined approval provisions for qualifying mixed-income projects
 - Bonus height, relaxed development standards, and elimination of density maximums within envelope

Draft AHO Map (Where it Applies)



SOURCE: City of Oakland, 2021; ALAMEDA County GIS, 2021; Dyett & Bhatia, 2022

DYETT & BHATIA
Urban and Regional Planners

AHO Zone – Exceptions to Application

- The AHO zone would not apply in:
 - Areas of the Very High Fire Hazard Severity Zone. Some parts of VHFHSZ may be included pending analysis
 - Parcels with Designated City, State, and Federal Historic Landmarks
- The AHO height addition would not apply in:
 - Areas with established historical significance known as Areas of Primary Importance (API), if the site currently contains a structure that contributes to a designated API
 - Projects in these areas must meet certain design requirements and preserve structures that contribute to the Area of Primary Importance.

AHO Zone – Proposed Development Standards

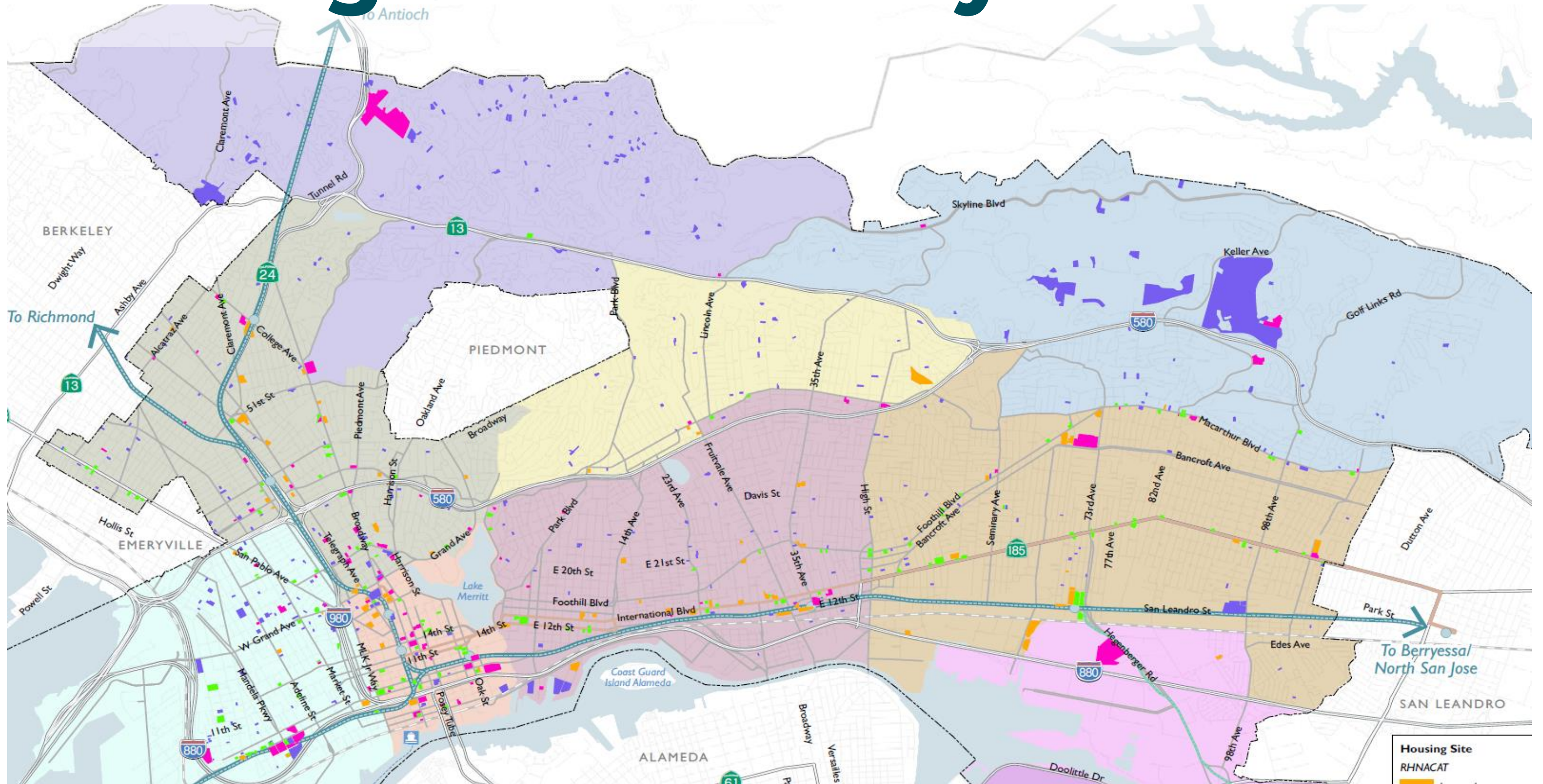
Permitted density	Unlimited density that fits within the allowed building envelope of new or existing structures
Rear Setback	Ten (10) feet.
Maximum Lot Coverage	Seventy percent (70%) or whatever is allowed in the base zone, whichever is higher
Height Regulations for all lots with a footprint slope of $\leq 20\%$	Two (2) additional stories above maximum permitted building height in the base zone
Height Regulations for lots equal to or greater than 12,000 sf	Sixty-five (65) feet or two (2) additional stories above maximum permitted building height in the base zone, whichever is higher.
Minimum Parking	No minimum parking requirements

Housing Sites Overlay Zone

Housing Sites Overlay Zone

- **Purpose:** Facilitate housing opportunities in Oakland and highlight the sites where City wants housing to be built
- **Components:**
- Create by-right approval for sites in the Housing Element's Site Inventory
 - For sites in the prior Housing Element cycles, all projects with 20 percent affordable units are permitted to develop by-right
 - For sites NOT in prior Housing Element Cycles
 - The project proposes at least as many units as described as the realistic capacity for the parcel, and at least one of the following conditions applies:
 - One hundred percent (100%) of the housing units, other than manager's units, are restricted to very low, low and moderate-income residents
 - 20% of housing units restricted for very low income households
 - 25% of housing units restricted for lower income households
 - 40% of housing units restricted to moderate income households

Housing Sites Overlay



Industrial Land Code Amendments

Industrial Land Code Amendments – Overview

- **Purpose:** increase protection for sensitive receptors (schools, daycares, residential zones, hospitals, etc.)
- **Components:**
 - Reduce the allowed intensity of commercial and industrial activities permitted in the Housing and Business Mix (HBX) Commercial Zones
 - Require certain heavier industrial uses in the Commercial Industrial Mix (CIX), General Industrial (IG), and Industrial Office (IO) Zones to obtain a CUP if located within 500 feet of a Residential Zone
 - Require truck-intensive uses to obtain special Conditional Use Permits/application of special performance standards and standard conditions of approval
 - Reduce land-use conflicts in industrial zone
 - Amend expiration timelines for Nonconforming Uses and CUP termination timelines for truck-intensive uses

Other Planning Code Amendments

Other Planning Code Amendments – Overview

Purpose:

- Comply with State regulations for special housing regulations;
- Improve public noticing to include building occupants;
- Remove constraints on staff's ability to process entitlements for housing projects; and
- Streamline the project approval process

Other Planning Code Amendments – Components

- Revise public noticing requirements to include building occupants
- Change CUP requirements for certain activities
- Provide clarifications regarding specific activities, such as agricultural activities, sidewalk cafes, and other civic and commercial activities
- Remove or reduce limitations to construction of new ground floor residential facilities in commercial zones
- Create definitions for key terms
- Extend Planning entitlement periods to further support a project's ability to move forward into the building permit stage and ultimately into construction and completion.
- Amendments specific to special housing needs

Next Steps

Upcoming Meetings & Milestones

- **March 3, 2023 - May 9, 2023 - Public Review Period**
- Final Zoning Amendments Released – Summer 2023
- Hearings – Summer – Fall 2023

LEARN MORE

To learn more about the **General Plan Update**, visit the website below and sign up for updates:

bit.ly/OaklandGPU